

Retractable Lance Inquiry Sheet

Thank you for your inquiry for retractable lances. By taking a few minutes to fill out this sheet, you will allow us to recommend the most applicable configuration for your application in the shortest amount of time possible. Please fill out the form as completely as possible. For variables that are not yet determined, please indicate a range of acceptable values.

Contact Information:

Date:	Name:
Telephone:	Company:
Fax:	Address:
Email:	Job/Reference #:

Codes:

Design Code/Registration: _____			
Vessel Design Pressure*: _____		Vessel Design Temperature*: _____	
Injector Design Pressure*: _____		Injector Design Temperature*: _____	
Corrosion Allowance: _____			
Other Specifications: _____			

*See Figure 1, Page 2

Additional Testing/QC Requirements:

All NDE Requirements of Requested Design Codes will be Performed Automatically

NDE Type	Extent of NDE and on What Components

Material Test Reports	<input type="checkbox"/> Yes <input type="checkbox"/> No	Weld Procedure Approval	<input type="checkbox"/> Yes <input type="checkbox"/> No
-----------------------	--	-------------------------	--

Spray Nozzle Selection:

What Liquid is being Sprayed: _____	Specific Gravity/Density: _____	
Viscosity: _____	Injection Fluid Flow Rate: _____	
Available Nozzle Pressure Drop: _____	Spray Pattern:	
Nozzle Spray Angle: _____	Spray Pattern Orientation*: _____	
Nozzle Connection Style:	Nozzle Model (if known): _____	

*See Figure 1

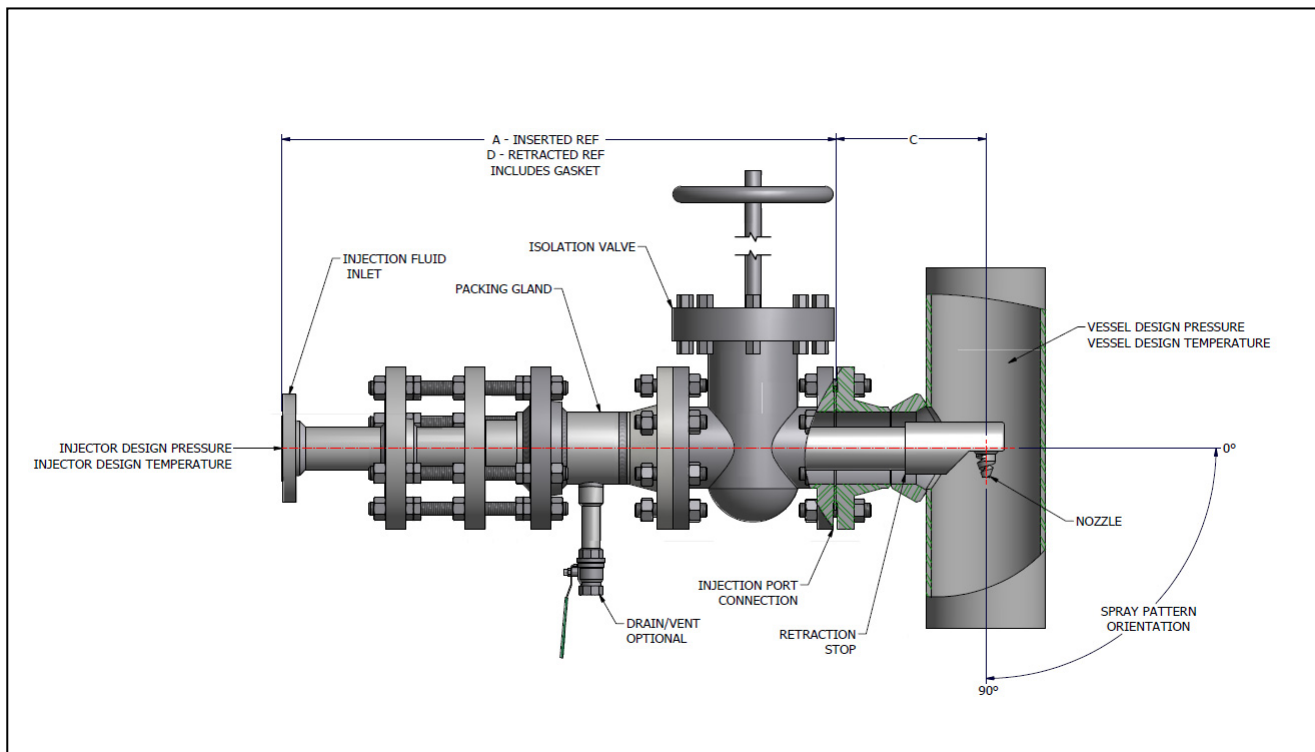


Figure 1: A Retractable Lance Inserted into a Vessel

Lance Assembly:

Required Insertion Length (Dimension C)*: _____	
Injection Port Connection Flange Size and Rating*: _____	
Injection Fluid Inlet Connection Size and Rating*: _____	
Maximum Retracted Length (Dimension D)*: _____	
Drain/Vent Valve Required to Purge Lance and Packing Gland after Valve is Closed?*	
Drain/Vent Valve Type: (please provide approved manufacturer list if applicable)	
Preferred Material of Components in Contact with Vessel Fluid:	
Preferred Material of Components in Contact with Injection Fluid:	
Preferred Material of all Other Components:	
Standard Packing Material Is Garlock Style 1303-FEP. If Other Please Specify:	
BETE to Supply Isolation Valve?*	
(please provide approved manufacturer list if applicable)	
Retraction Mechanism Required?***	

*See Figure 1, Page 2
**See Figure 2, Page 4

Comments/Other Notes:

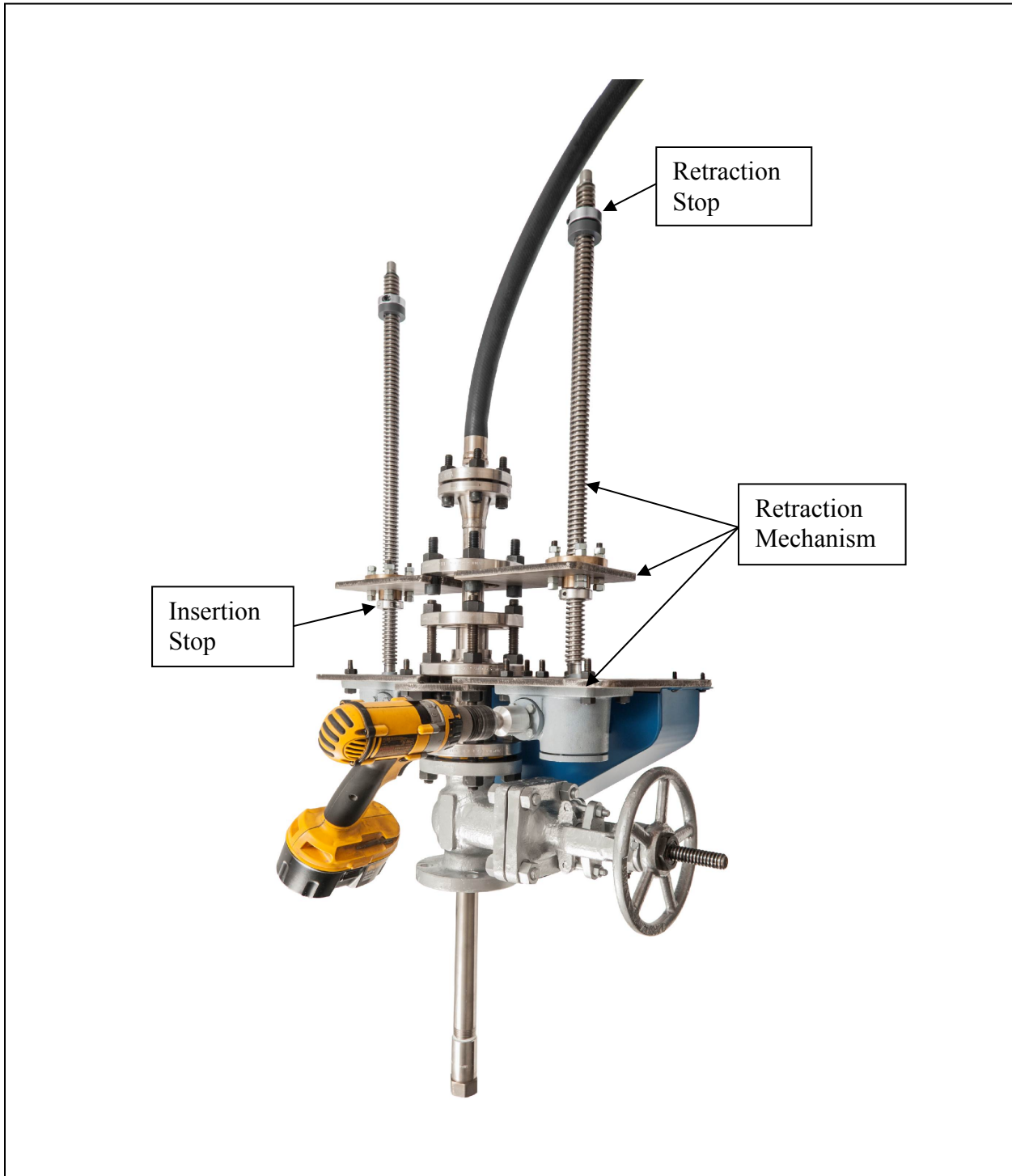


Figure 2: Retractable Lance with Optional Retraction Mechanism that can be Driven by a Cordless Drill. Drill Not Included.