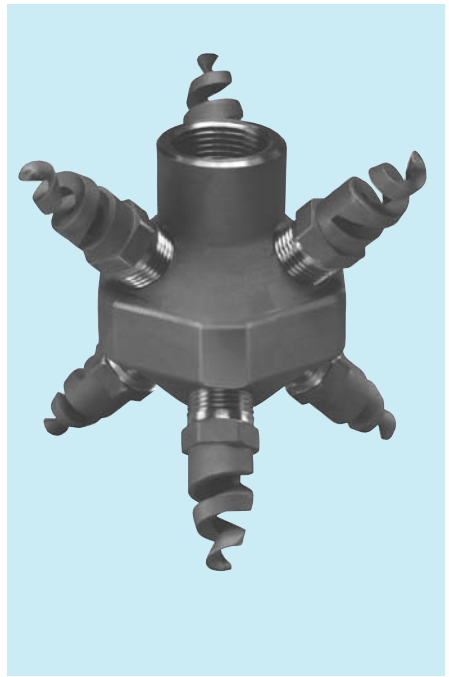


LEM

Tank Washing Nozzle



DESIGN FEATURES

- Each nozzle in the stationary cluster is a BETE clog-resistant spiral nozzle of the TF Series
- Can be supplied with various other BETE nozzles for any desired application
- Female connection

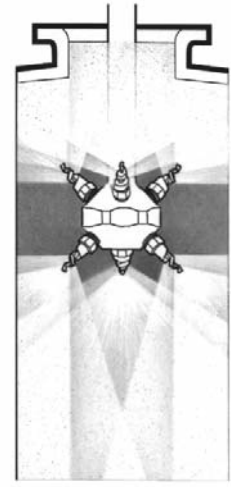
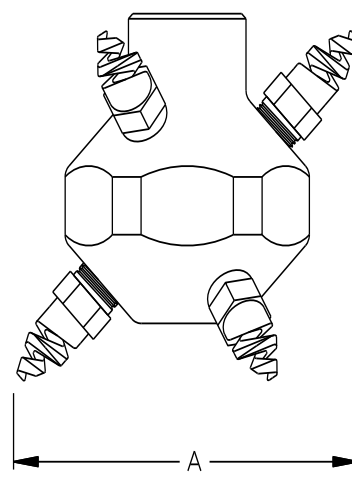
SPRAY CHARACTERISTICS

- Spherical omnidirectional coverage
 - Six nozzles arranged in cluster to project spray in all directions
- Flow rates:** 16.0 to 597 l/min
(special flow rates available, special tips upon request)

TANK WASHING

LEM Coverage Chart When Spraying at 3 - 4 BAR

| Female Pipe Size | Nozzle Number | Scrubbing Diameter (mm) | Rinsing Diameter (mm) |
|------------------|---------------|-------------------------|-----------------------|
| 3/4 | LEM6 | 450 | 900 |
| | LEM8 | 900 | 1800 |
| | LEM10 | 1400 | 2700 |
| 1 | LEM12 | 2000 | 4000 |
| | LEM14 | 2100 | 4200 |
| | LEM16 | 2200 | 4400 |
| | LEM20 | 2400 | 4900 |



Typical LEM installation

Dimensions are approximate. Check with BETE for critical dimension applications.

LEM Flow rates and dimensions

Spherical, 360° Spray Angle, 3/4" and 1" Pipe Sizes, BSP or NPT

| Female Pipe Size | Nozzle Number | K Factor | LITERS PER MINUTE @ BAR | | | | | | | | Minimum Entrance Open. (mm) A | Weight | |
|------------------|---------------|----------|-------------------------|-------|---------|-------|-------|-------|-------|-------|-------------------------------|------------|-----------|
| | | | 0.7 bar | 1 bar | 1.5 bar | 2 bar | 3 bar | 4 bar | 5 bar | 7 bar | | (kg) Metal | (g) Plas. |
| 3/4 | LEM6 | 19.1 | 16.0 | 19.1 | 23.4 | 27.1 | 33.2 | 38.3 | 42.8 | 50.6 | 114 | 1.02 | 170 |
| | LEM8 | 36.5 | 30.5 | 36.5 | 44.7 | 51.6 | 63.2 | 72.9 | 81.5 | 96.5 | | | |
| | LEM10 | 57.0 | 47.7 | 57.0 | 69.8 | 80.6 | 98.7 | 114 | 127 | 151 | | | |
| 1 | LEM12 | 82.0 | 68.6 | 82.0 | 100 | 116 | 142 | 164 | 183 | 217 | 133 | 1.87 | 312 |
| | LEM14 | 111 | 92.7 | 111 | 136 | 157 | 192 | 222 | 248 | 293 | | | |
| | LEM16 | 144 | 120 | 144 | 176 | 203 | 249 | 287 | 321 | 380 | | | |
| | LEM20 | 226 | 189 | 226 | 276 | 319 | 391 | 451 | 504 | 597 | | | |

$$\text{Flow Rate (l/min)} = K \sqrt{\text{bar}}$$

Standard Materials: Brass, 316 Stainless Steel, PVC, and PTFE

Spray angle performance varies with pressure. Contact BETE for specific data on critical applications.

TO ORDER: specify pipe size, connection type, nozzle number, spray angle, and material.