

# NFV

## Fan Nozzle with Integral Strainer Option

### DESIGN FEATURES

- One-piece construction
- No internal parts
- Male connection
- Low nozzle maintenance
- Optional removable strainer for easy cleaning

**Connections:** Male NPT and BSP

**Optional Strainer:** 50, 100, 200 mesh

### SPRAY CHARACTERISTICS

- High impact
- Uniform distribution

**Spray pattern:** Flat Fan and Straight Jet

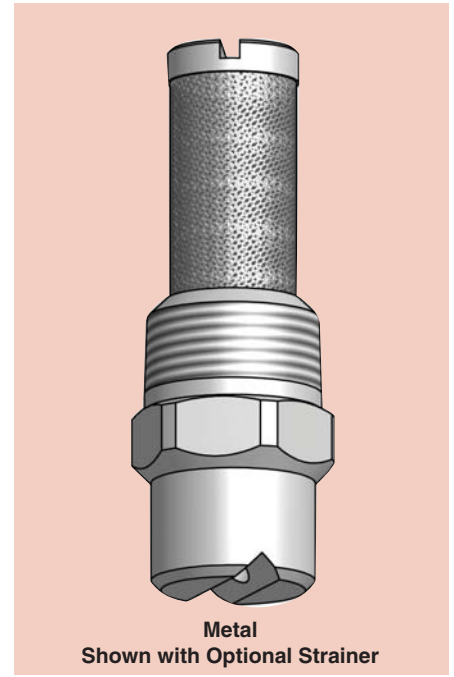
**Spray angles:** 0°, 15°, 25°, 40°, 50°, 65°, 80°, 95°, 110°

NFV0017: Max spray angle available 80°

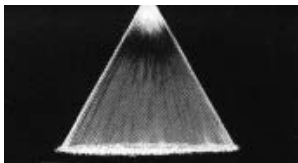
NFV0025: Max spray angle available 80°

NFV0033: Max spray angle available 95°

**Flow rates:** 0.011 to 12.6 gpm



FAN

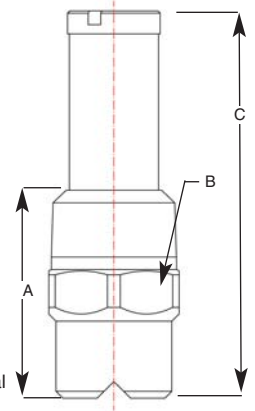


Fan 50°

Call BETE to verify spray angle performance at operating pressures above 70 psi.

### NFV Dimensions

Pipe Size	Dimensions (in.)			Wt. (oz.)
	A	B	C	
1/8	0.88	0.44	1.49	1.00
1/4	1.06	0.56	1.69	1.50



### To Order: Spray Set-up Number

1/4 NFV 0067 95 -L -B 303

pipe size      series      nozzle number      spray angle      optional strainer, also specify mesh size      specify material

BSP thread

### NFV Flow Rates

Fan and Straight Jet, 0°, 15°, 25°, 40°, 50°, 65°, 80° (all sizes); 95° (NFV0033 and higher); 110° (NFV005 and higher)

Male Pipe Size	Nozzle Number	K Factor	GALLONS PER MINUTE @ PSI										Equiv. Orifice Dia. (in.)	Screen Mesh Selection Guide
			15 PSI	20 PSI	30 PSI	40 PSI	60 PSI	80 PSI	100 PSI	150 PSI	200 PSI	400 PSI		
1/8"	NFV0017**	0.0027	0.011	0.012	0.015	<b>0.017</b>	0.021	0.024	0.027	0.032	0.038	0.054	0.011	200
	NFV0025**	0.0040	0.015	0.018	0.022	<b>0.025</b>	0.031	0.036	0.040	0.049	0.057	0.080	0.014	200
	NFV0033**	0.0052	0.020	0.023	0.028	<b>0.033</b>	0.040	0.047	0.052	0.063	0.074	0.105	0.015	200
	NFV005	0.0079	0.030	0.035	0.042	<b>0.050</b>	0.061	0.071	0.079	0.095	0.110	0.160	0.020	100
	NFV0067	0.0106	0.041	0.047	0.057	<b>0.067</b>	0.082	0.095	0.110	0.130	0.150	0.210	0.023	100
or 1/4"	NFV01	0.0158	0.06	0.07	0.09	<b>0.10</b>	0.12	0.14	0.16	0.19	0.22	0.32	0.026	100
	NFV015	0.0237	0.09	0.11	0.13	<b>0.15</b>	0.18	0.21	0.24	0.29	0.34	0.47	0.031	100
	NFV02	0.0316	0.12	0.14	0.17	<b>0.20</b>	0.25	0.28	0.32	0.39	0.45	0.63	0.036	100
	NFV025	0.0395	0.15	0.18	0.22	<b>0.25</b>	0.31	0.35	0.40	0.48	0.56	0.79	0.040	50
	NFV03	0.0474	0.18	0.21	0.26	<b>0.30</b>	0.37	0.42	0.47	0.58	0.67	0.95	0.043	50
	NFV04	0.0632	0.25	0.28	0.35	<b>0.40</b>	0.49	0.57	0.63	0.78	0.89	1.25	0.052	50
	NFV05	0.0791	0.31	0.35	0.43	<b>0.50</b>	0.61	0.71	0.79	0.97	1.12	1.58	0.057	50
	NFV06	0.0949	0.37	0.42	0.52	<b>0.60</b>	0.74	0.85	0.95	1.16	1.34	1.90	0.062	50
	NFV07	0.111	0.43	0.50	0.61	<b>0.70</b>	0.86	0.99	1.11	1.36	1.57	2.22	0.082	50
	NFV08	0.126	0.49	0.57	0.69	<b>0.80</b>	0.98	1.13	1.26	1.55	1.79	2.53	0.072	50
	NFV10	0.158	0.61	0.71	0.87	<b>1.00</b>	1.22	1.41	1.58	1.94	2.24	3.16	0.080	50
	NFV15	0.237	0.92	1.06	1.30	<b>1.50</b>	1.84	2.12	2.37	2.90	3.35	4.74	0.094	50
	NFV20	0.316	1.22	1.41	1.73	<b>2.00</b>	2.45	2.83	3.16	3.87	4.47	6.32	0.109	50
	NFV30	0.474	1.84	2.12	2.60	<b>3.00</b>	3.67	4.24	4.74	5.81	6.71	9.49	0.141	50
	NFV40	0.632	2.45	2.45	3.46	<b>4.00</b>	4.90	5.66	6.32	7.75	8.94	12.60	0.156	50

\*\*NFV0017: Max spray angle available 80°; NFV0025: Max spray angle available 80°; NFV0033: Max spray angle available 95°

Flow Rate (GPM) = K √PSI Standard Materials: Brass and 303 Stainless Steel. Highlighted NFVs available in 316 Stainless Steel.

Spray angle performance varies with pressure. Contact BETE for specific data on critical applications.

[www.BETE.com](http://www.BETE.com)

CALL 413-772-0846  
Call for the name of your nearest BETE representative.