

# ScrubMate™



## ScrubMate™ Rotating Washing Nozzles

### DESIGN FEATURES

- Compact design fits through small openings. O.D.: SM50 - 1.93", SM75 - 2.83", SM30 - 1.38"
- Superior cleaning at low pressures and low flow rates for greater economy
- Self cleaning
- Patented mist-reducing head
- No ball bearings to corrode

### SPRAY CHARACTERISTICS

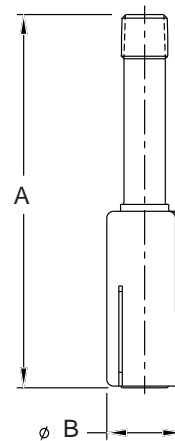
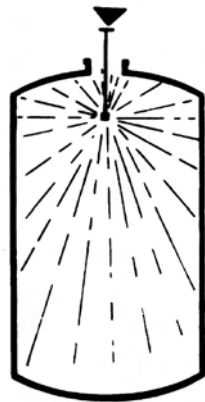
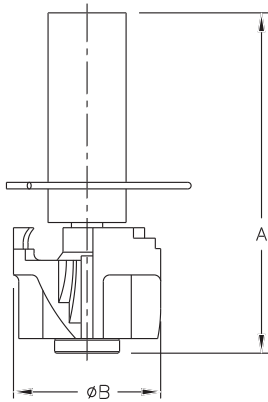
- High impact scrubbing action
- Slow rotation speed provides better cleaning
- Wide coverage

**Flow rates:** 21 to 76 gpm



ScrubMate™ SM50

ScrubMate™ SM30



ScrubMate™ SM30

### ScrubMate™ Coverage Chart

When spraying at 40 PSI

	Nozzle Number	Scrubbing Diameter (ft.)	Rinsing Diameter (ft.)
Pipe Size: 1/2"	SM30	4.9	6.6
Tube Size: 1"	SM50	7.0	14.0
1 1/2"	SM75	9.0	18.0

Dimensions are approximate. Check with BETE for critical dimension applications.

### ScrubMate™ Flow Rates and Dimensions

ScrubMate™ 360°, 1" and 1 1/2" Pipe Sizes, Sanitary Connection

	Nozzle No.	K Factor	GALLONS PER MINUTE @ PSI					Approximate Free Passage Dia. (in.)	Dim. (in.)		Wt. (oz.)
			20 PSI	30 PSI	40 PSI	50 PSI	60 PSI		A	B	
Pipe Size: 1/2"	SM30	5.14	23	28	32	36	39	0.055	6.8	1.38	9.5
Tube Size: 1"	SM50	4.585	21	25	29	32	36	0.110	4.9	1.93	6.5
1 1/2"	SM75	9.803	44	54	62	69	76	0.185	6.5	2.83	15.5

$$\text{Flow Rate (GPM)} = K \sqrt{\text{PSI}}$$

Standard Materials: Body/Shaft - 316 Stainless Steel, Rotor - Acetal-CoPolymer or PTFE.

SPECIAL PURPOSE

TO ORDER: specify pipe size, connection type, nozzle number, spray angle, and material.