

THW

Tangential Inlet/Wide Spray Band



Metal

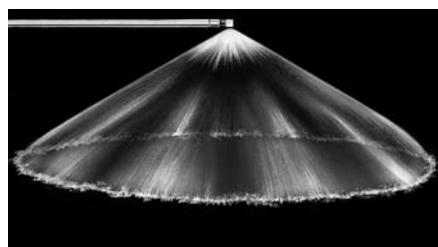
DESIGN FEATURES

- Large free passage
- Clog-resistant; nozzles have no internal parts
- Wide spray band
- Female connection
- Flanged connection available
- U.S. Patent 4,231,524
- Inlet and outlet are in-line

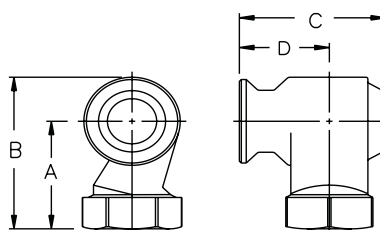
SPRAY CHARACTERISTICS

- Spray pattern:** Hollow Cone
- Spray angle:** Wide
- Flow rates:** 15.3 to 2230 l/min

Silicon carbide requests require review prior to quote/order acceptance. Please contact BETE for information.



Hollow Cone - Wide Angle



Dimensions are approximate. Check with BETE for critical dimension applications.

THW Flow Rates and Dimensions

Hollow Cone, Wide Spray Angles, 1" to 3" Pipe Sizes, BSP or NPT

Female Pipe Size	Nozzle Number	Spray Angles			K Factor	LITERS PER MINUTE @ BAR								Approx. Orifice Dia. (mm)	Free Pass. Dia. (mm)	Dimensions (mm)				Wt. (kg)
		0.3 bar	1 bar	3 bar		0.2 bar	0.3 bar	0.5 bar	0.7 bar	1 bar	1.5 bar	2 bar	3 bar			A	B	C	D	
1	THFW1508	100°	100°	100°	34.2	15.3	18.7	24.2	28.6	34.2	41.9	48.3	59.2	8.73	8.73	58.7	79.2	58.7	35.0	0.18
	THFW1808	115°	115°	115°	41.0	18.3	22.5	29.0	34.3	41.0	50.2	58.0	71.0	9.53	9.53					
	THFW2308	120°	120°	120°	52.4	23.4	28.7	37.1	43.9	52.4	64.2	74.1	90.8	11.1	11.1					
	THFW2708	120°	120°	120°	61.5	27.5	33.7	43.5	51.5	61.5	75.4	87.0	107	11.9	11.9					
	THFW3208	120°	120°	120°	72.9	32.6	39.9	51.6	61.0	72.9	89.3	103	126	13.9	13.9					
	THFW3808	125°	125°	125°	86.6	38.7	47.4	61.2	72.5	86.6	106	122	150	15.2	15.2					
1 1/4	THFW3210	120°	120°	120°	72.9	32.6	39.9	51.6	61.0	72.9	89.3	103	126	13.9	13.9	73.1	97.8	73.1	44.4	0.54
	THFW3810	125°	125°	125°	86.6	38.7	47.4	61.2	72.5	86.6	106	122	150	15.9	15.9					
	THFW4110	125°	125°	125°	93.4	41.8	51.2	66.1	78.2	93.4	114	132	162	16.7	16.7					
	THFW5210	125°	125°	125°	119	53.0	64.9	83.8	99.1	119	145	168	205	19.8	19.8					
	THFW7010	125°	125°	125°	160	71.3	87.4	113	133	160	195	226	276	26.2	22.6					
1 1/2	THFW6112	110°	110°	110°	139	62.2	76.1	98.3	116	139	170	197	241	19.4	19.4	74.7	104	91.9	58.4	1.00
	THFW7012	112°	115°	115°	160	71.3	87.4	113	133	160	195	226	276	21.4	21.4					
	THFW7712	117°	120°	120°	175	78.5	96.1	124	147	175	215	248	304	23.4	23.4					
	THFW9012	117°	120°	120°	205	91.7	112	145	172	205	251	290	355	26.2	26.2					
	THFW12712	117°	120°	120°	289	129	159	205	242	289	354	409	501	32.9	27.0					
	THFW14512	117°	120°	120°	330	148	181	234	276	330	405	467	572	36.1	27.0					

$$\text{Flow Rate (l/min)} = K \sqrt{\text{bar}}$$

Standard Materials: Brass, Carbon Steel and 316 Stainless Steel.

Spray angle performance varies with pressure. Contact BETE for specific data on critical applications.

TO ORDER: specify pipe size, connection type, nozzle number, spray angle, and material.

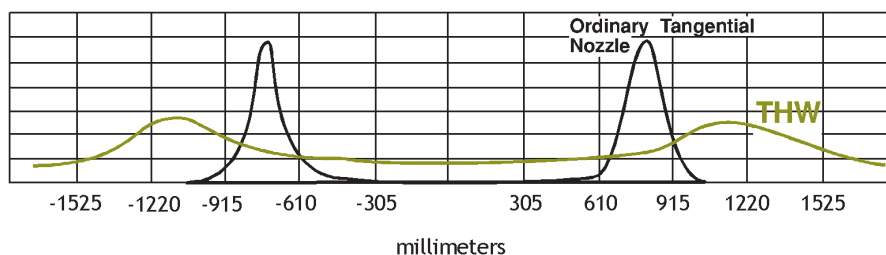
WHIRL



Silicon Carbide, Flanged

Silicon carbide requests require review prior to quote/order acceptance. Please contact BETE for information.

Note: spray angles are for cast alloy nozzles only; not SNBSC.



Dimensions are approximate. Check with BETE for critical dimension applications.

THW Flow Rates and Dimensions

Hollow Cone, Wide Spray Angles, 1" to 3" Pipe Sizes, BSP or NPT

Female Pipe Size	Nozzle Number	Spray Angles			K Factor	LITERS PER MINUTE @ BAR								Approx. Orifice Dia. (mm)	Free Pass. Dia. (mm)	Dimensions (mm)				Wt. (kg)
		0.3 bar	1 bar	3 bar		0.2 bar	0.3 bar	0.5 bar	0.7 bar	1 bar	1.5 bar	2 bar	3 bar			A	B	C	D	
2	THFW8516	112°	115°	115°	194	86.6	106	137	162	194	237	274	336	21.8	21.8	91.9	130	114	70.6	1.81
	THFW10516	120°	122°	122°	239	107	131	169	200	239	293	338	414	25.4	25.4					
	THFW12516	119°	122°	122°	285	127	156	201	238	285	349	403	493	29.0	29.0					
	THFW14516	122°	125°	125°	330	148	181	234	276	330	405	467	572	32.1	32.1					
	THFW17016	125°	125°	125°	387	173	212	274	324	387	474	548	671	35.3	35.3					
	THFW19216	125°	125°	125°	438	196	240	309	366	438	536	619	758	38.5	36.5					
	THFW20516	125°	125°	125°	467	209	256	330	391	467	572	661	809	41.3	36.5					
	THFW23016	125°	125°	125°	524	234	287	371	439	524	642	741	908	44.5	36.5					
2 1/2	THFW17020	117°	120°	120°	387	173	212	274	324	387	474	548	671	33.7	33.7	125	172	143	88.1	2.90
	THFW19020	117°	120°	120°	433	194	237	306	362	433	530	612	750	36.1	36.1					
	THFW20520	117°	120°	120°	467	209	256	330	391	467	572	661	809	37.3	37.3					
	THFW23020	123°	125°	125°	524	234	287	371	439	524	642	741	908	40.1	40.1					
	THFW28020	128°	130°	130°	638	285	349	451	534	638	781	902	1110	46.0	44.5					
	THFW32020	128°	130°	130°	729	326	399	516	610	729	893	1030	1260	51.2	44.5					
	THFW34020	128°	130°	130°	775	347	424	548	648	775	949	1100	1340	53.2	44.5					
	THFW43520	128°	130°	130°	991	443	543	701	829	991	1210	1400	1720	61.9	44.5					
3	THFW18524	122°	122°	122°	422	189	231	298	353	422	516	596	730	32.5	32.5	145	200	173	109	4.08
	THFW23024	122°	122°	122°	524	234	287	371	439	524	642	741	908	36.5	36.5					
	THFW28024	122°	122°	122°	638	285	349	451	534	638	781	902	1110	41.3	41.3					
	THFW32024	125°	125°	125°	729	326	399	516	610	729	893	1030	1260	45.2	45.2					
	THFW34024	125°	125°	125°	775	347	424	548	648	775	949	1100	1340	46.8	46.8					
	THFW41224	128°	130°	130°	939	420	514	664	786	939	1150	1330	1630	53.6	53.6					
	THFW46924	129°	132°	135°	1070	478	585	756	894	1070	1310	1510	1850	57.9	54.0					
	THFW52624	129°	132°	135°	1200	536	657	848	1000	1200	1470	1700	2080	63.1	54.0					
	THFW56424	129°	132°	135°	1290	575	704	909	1080	1290	1570	1820	2230	65.9	54.0					

Flow Rate (l/min) = $K \sqrt{\text{bar}}$

Standard Materials: Brass, Carbon Steel and 316 Stainless Steel.

Spray angle performance varies with pressure. Contact BETE for specific data on critical applications.



CALL 413-772-0846
Call for the name of your nearest BETE representative.